

Invitation to the Society of Project Management

<https://www.spm.or.jp/>



The Society of Project Management

Welcome message from the President

Since 1999, The Society of Project Management has been involved in the advancement of both the theory and practice of project management. We have popularized and raised awareness of advanced knowledge, skills, and techniques of project management among individuals and industrial sectors in Japan and around the world. Many members have participated in the international conference “ProMAC” and regular spring and fall national conferences in which they present their achievements in research and corporate experience. This has enabled us to contribute to the accumulation and publicity of enormous achievements. ProMAC, whose purpose is to achieve a balanced development of project management competence among the North American, European, and Asian regions, has contributed to the education on and dissemination of project management in Asia, as well as to the communication of the distinctive activities of the cooperating members. Through the global dissemination of papers, ProMAC is now highly recognized in both theoretical and applied areas. Additionally, we provide members with over 6,000 pages of information per year through periodicals, newsletters, conference proceedings, and many hot-topic seminar documents. These are stored at the National Diet Library and made available to the public on J-STAGE, which is operated by the Japan Science and Technology Agency. This enhances the value of members’ academic and practical works, highlights their competitive advantage and originality, and contributes to the dissemination of project management. We have previously been commissioned by the Japan Industrial Standards Committee (JISC) as a mirror committee of ISO TC 258 Project, Program and Portfolio Management, and have contributed to international standardization activities over a long period. In these activities, we have also conducted domestic standardization activities to publish related ISO standards as Japanese Industrial Standards (JIS), thereby contributing to strengthening the international competitiveness of Japanese industry. As a member of the International Project Management Association (IPMA), which consists of 70 PM organizations worldwide, we presently provide novel benefits to our members through various activities: cooperation activities with IPMA, Japanese localization of IPMA’s rich intellectual property, and so on.

Our ability to do this relies on the active participation of our members. Our ability and value of the members themselves will be enhanced and increased through vigorous discussion and publication of articles by many members. We are waiting for you to join the Society of Project Management.



Tetsuro SEKI, President
September 2023

The Society of Project Management (SPM) Overview

Organization Basics

The Society of Project Management (SPM)

A member of the following organizations:

Science Council of Japan (SCJ)

Japan Federation of Managerial Engineering Societies (FMES)

International Project Management Association (IPMA)

President (Representative Director)

Tetsuro SEKI, Dr., Prof. (Bunkyo University)

Visions

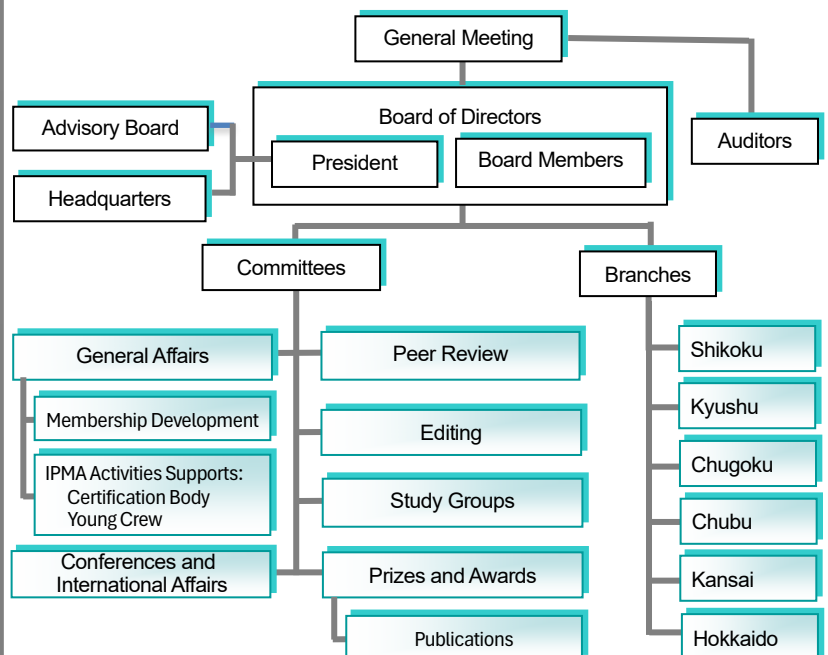
Contributing to the sound development of the international community by creating, establishing, and developing academic and technical frameworks for project management. Members from various fields vigorously implement activities in an open, neutral, cooperative, and interdisciplinary manner. Through various activities in accordance with this approach, the SPM aims to derive high-level results of theoretical and practice research, improve technical and practical approaches, and promote advancement of project management. In addition, SPM would like to contribute to progress in corporate, industrial, social, economic, academic, and cultural environments. SPM will continue to grow and motivate and provide a sense of achievement to its members.

Objectives

To establish and continuously develop project management practices and increase public recognition of project managers’ status, SPM is committed to aggressively implementing activities in line with the organization’s visions and missions:

- 1) Contributing to society through project management.
- 2) Providing opportunities for broad discussions aimed at improving the status of a project manager and for broader application of project management.
- 3) Reinforcing the organization’s operational structure.

Organizational Structure



Major Activities

1. Journal and Newsletter Publication

Each publication frequency: bi-monthly

Journals and newsletters showcase highly academic and practical research papers and feature articles as well as the latest trends and feature articles in specific application areas for comprehensive understanding of project management.

2. Regular and Special Events

International Conference: Established in 2002, ProMAC is a three-day conference held annually to promote international knowledge exchange with approximately 150 papers and keynote addresses.

National Conference: Established in 1999, the annual Spring/Autumn National Conference is a two-day conference featuring approximately 150 research and practice papers and keynote addresses from academia and practice.



ProMAC



Spring/Autumn National Conferences

Let's Talk to the Senior PM: This casual after-hours meeting is designed to provide basic project management knowledge from senior project managers to those who are willing to learn from practical project experiences. Other symposiums, forums, and seminars are frequently organized to share project management knowledge, skills, and techniques.

3. Technical Review of Research Papers

Based on the observations of at least two reviewers, the Peer Review Committee duly examines the validity of the submitted papers in terms of academic and/or practical attributes and makes a judgment accordingly. Many individuals have used SPM-reviewed papers for their own doctoral work.

4. Recognitions

The awards and honors are given to outstanding individuals and organizations that have made significant contributions to the advancement of project management and the profession.

5. International Activities

SPM is registered as an IPMA member association, and exclusively provides IPMA literatures, such as ICB 4.0, in Japanese to members to support them to get global and advanced knowledge about project, program and portfolio management. SPM also operates the IPMA 4-level Certification in Japanese.

6. Special Interest Groups

Study groups for various research areas, such as agile, AI, and legal precedent, are open to all members. Currently there are five study groups. New groups will be added based on the technical trends in project management and member requests.

7. Publications

Original books have been published that cover the basics as well as comprehensive methodologies and guidelines for managing projects, programs, and portfolios.

8. Branch activities

There are six regional branches in Japan, and each contributes to the development of talents in project management by for project management and stimulating their designated region through research and application of project management.



Let's Talk to Senior PM



Casual After-hours Meetings

Footsteps of the Society of Project Management - 1999 ~ 2022

1999	<ul style="list-style-type: none"> • March - SPM established • Publication of SPM Journal and SPM Newsletter started • First National Conference held • PM Glossary (English - Japanese) compiled 	2011	<ul style="list-style-type: none"> • Established Kansai Branch • ProMAC held in Batam Island, Indonesia • Entrusted as a mirror committee of ISO TC 258 by JISC
2000	<ul style="list-style-type: none"> • Established SPM's Vision • Joined as a member of the Japan Federation of Managerial Engineering Societies (FMES) 	2012	<ul style="list-style-type: none"> • Established Hokkaido Branch • ProMAC held in Honolulu, USA
2001	<ul style="list-style-type: none"> • Achieved bimonthly publication of the Journal and Newsletter • SPM's Official Logo created 	2013	<ul style="list-style-type: none"> • New SPM Awards (Outstanding Commentary Award, Incentive Award and Excellent Partnership Award in Application Awards) established • ProMAC held in Hanoi, Vietnam
2002	<ul style="list-style-type: none"> • The 3rd Anniversary event held in Nihombashi, Tokyo • Joined as a member of the Science Council of Japan (SCJ) • Joined as a member of the Japan Accreditation Board for Engineering Education (JABEE) • Established Shikoku Branch • The first ProMAC held in Singapore 	2014	<ul style="list-style-type: none"> • The 15th Anniversary event held in Shinagawa, Tokyo • ISO TC 258 Plenary Meeting held in Kyoto • ProMAC held in Kuala Lumpur, Malaysia
2003	<ul style="list-style-type: none"> • Established Kyushu Branch • Twilight Salon started • The first original book published • New Year's Seminar started as for corporate members 	2015	<ul style="list-style-type: none"> • ProMAC held in Sapporo, Japan
2004	<ul style="list-style-type: none"> • Education Forum launched to develop standardized university project management curriculum • ProMAC held in Makuhari, Japan 	2016	<ul style="list-style-type: none"> • Joined as a Member Association of International Project Management Association (IPMA) • ProMAC held in Gold Coast, Australia • ISO TC 258 WG4 meeting held in Tokyo, Japan • New SPM Award (Student Presentation Award) established
2005	<ul style="list-style-type: none"> • Established Chugoku Branch • SPM Awards (Prize of SPM, Distinguished Paper Award and Paper Incentive Award) established 	2017	<ul style="list-style-type: none"> • ProMAC held in Munich, Germany
2006	<ul style="list-style-type: none"> • Headquarters moved to Nishi-Funabashi, Chiba • ProMAC held in Sydney, Australia 	2018	<ul style="list-style-type: none"> • ProMAC held in Bangkok, Thailand
2007	<ul style="list-style-type: none"> • Headquarters moved to Shimbashi, Tokyo. • Advisory Board of professors and corporate executives established 	2019	<ul style="list-style-type: none"> • ProMAC held in Yangon, Myanmar • SPM-Young Clue Japan established
2008	<ul style="list-style-type: none"> • Established Chubu Branch • ProMAC held in Anchorage, USA • Board of Delegates established 	2020	<ul style="list-style-type: none"> • The 20th Anniversary event held in Shinagawa, Tokyo
2009	<ul style="list-style-type: none"> • The 10th Anniversary event held in Hibiya, Tokyo • Converted to a General Incorporated Association • ProMAC held in Bangkok, Thailand • New SPM Awards (Application Awards) established 	2021	<ul style="list-style-type: none"> • ProMAC held in Kumamoto, Japan
2010	<ul style="list-style-type: none"> • ProMAC held in Tokyo Bay Area, Japan • SPM standard "Organizational Function for Successful Project" established 	2022	<ul style="list-style-type: none"> • Converting Journal and Newsletter to electronic publication

Member's Benefits

- Receive a wide range of information, including journals, newsletters, and more
- Receive special discounts on registration fees for SPM conferences and events
- Attend special events exclusively for members
- Publish papers and articles in journals and newsletters; present at a conference
- Use event attendance certificate to earn credits toward renewing your certifications

Members (approximately as of September 2022)

Individual members: 1,800

Corporate members: 120

Headquarters

Shimbashi Office
2nd floor, ABC Building, Shimbashi 5-12-9, Minato-ku, Tokyo, 105-0004, Japan

URL: <https://www.spm.or.jp/>
FAX: +81-50-3588-6935

